



New Psychiatric Hospital
Slagelse 2010-15

ARCTIC

" We have approached this assignment with great seriousness, realising that the people we working for, ind the end, are much more depening on great architecture than the rest of us "

Christian Karlsson
Partner of Karlsson Architects

LIGHTHOUSE OF NEW PSYCHIATRIC BUILDING

CLIENT
Region Sjælland (Region Zealand)

1. PRIZE CONCEPT COMPETITION 2009
1. PRIZE PROJECT COMPETITION 2010

MAIN CONSULTANTS AND ARCHITECTS
Karlsson arkitekter / VLA

The program:

- placed in Slagelse
- 44.000 m²
- 194 individual patient rooms general, forensics and high security clinics, research and educating facilities
- ca. 650 employees
- 1.15 bia. dkk / 162 million Euro
- facilities for therapy, sports and activity

SUB CONTRACTORS
Schönherr, landscape

MOE, engineering construction

NNE Pharmaplan, engineering installations

Cenergia Energy, environmental consultants

CONSULTANTS

Bartenbach Lichtlabor, light consultants

ARUP, glass constuctions

The judging committee remarks :

" The main disposition is exemplary simple, clear and functional. There is a nice and very convincing feature about the concept – a fine-meshed, variated, and flexible building design of the hospital's functions can internally be created, while maintaining the external simple and clarified expression of the project. "

KARLSSON ARCHITECTS DEVELOPS THE FUTURE SPACE FOR THE TREATMENT OF PSYCHIATRIC PATIENTS !

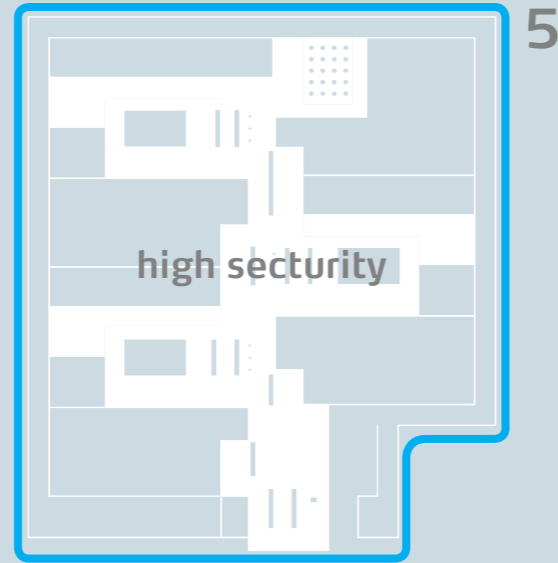
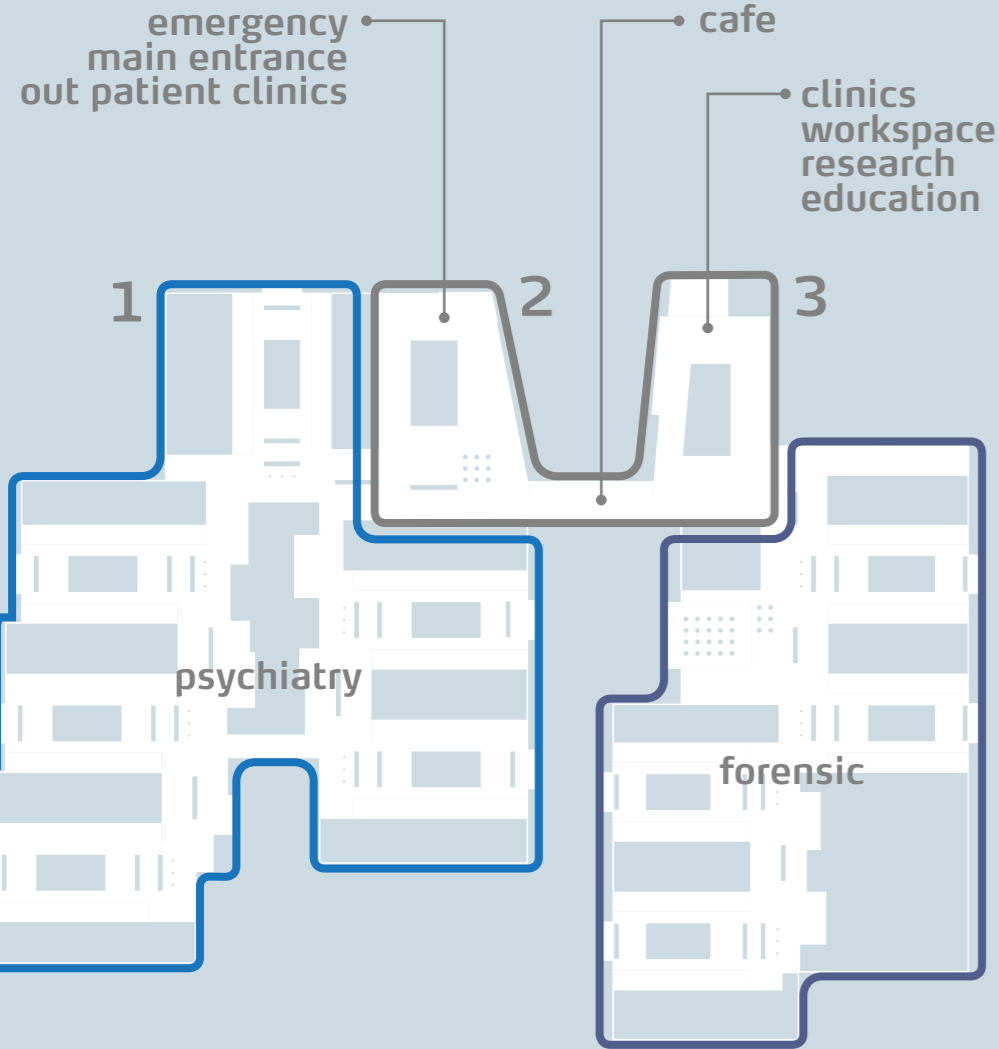
We have taken the lead in an abtitious and innovative process in close collaboration with the client. Redefine the values, idears and the frames for treating people with psychiatric diagnoses based on a humanistic vision .

The layout and design supports the proces of recovery and the future models for collaboration, management and a flexible organization.

The main issues in the design are :

- proximity and diversity
- transparency
- daylight / artificial light
- indoor/outdoor relations and access

In the following pages we will share more about the concept the design.



PROGRAM

The building accommodates both general psychiatric, forensic / high security wards, ambulatory and emergency reception, training facilities and a center for research and education.

The project stands in the frontline of redefining the way we are working with psychiatry treatment.

This has been achieved through close dialog and collaboration with the patients, staff, artists and experts throughout the project development process.

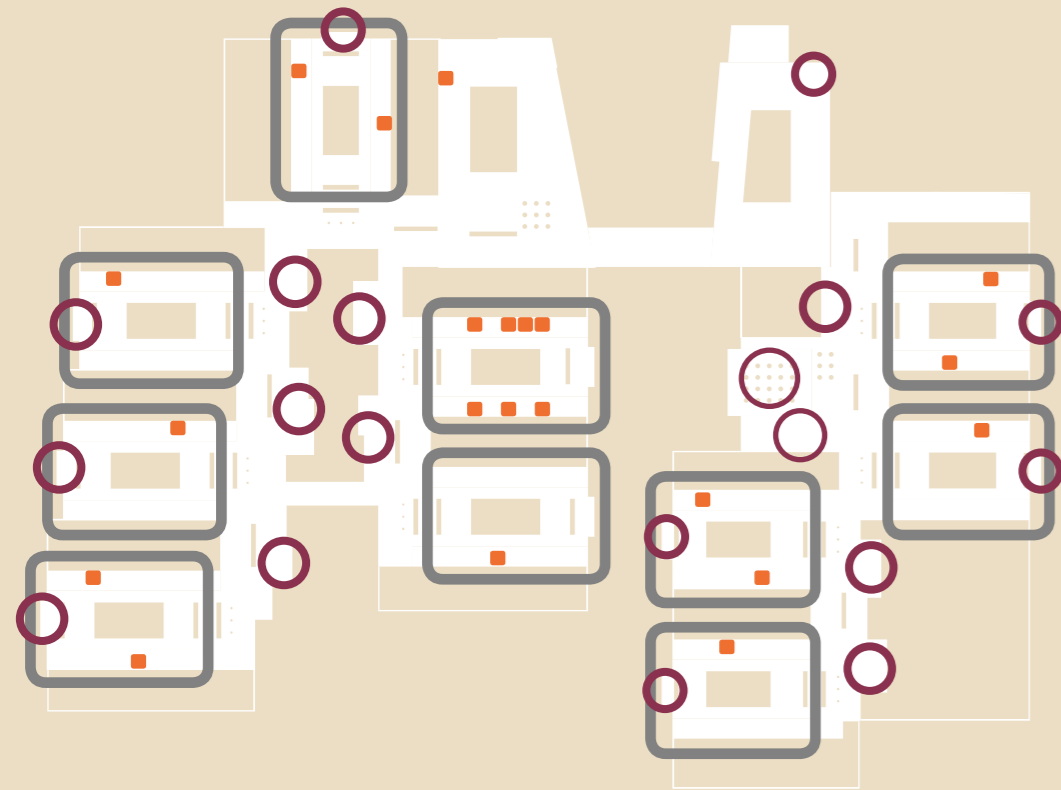
The concept of the project is based on the principles of recovery through a healing architecture - proximity between people and functions, transparency and hierarchy of space and stimuli.

"You can tell the civil level of a community in how it treats the weakest. Here we have come a long way !

A noble welfare architecture, we can certainly be proud of !
- and one could only wish that this level of design and empathetic would be a model for our treatment of all the most vulnerable, from dementia to asylum seekers"

*Excerpts from review
Written by Carsten Ifversen
for Politiken 30/08/2015*





- patient rooms
- patient sections
- activity rooms

PROXIMITY / DIVERSITY

The design of the New psychiatric hospital in Slagelse is based on the vision of recovery, supporting each individual process by both proximity and diversity in opportunities, scaling and detailing.

From the privacy in individual patientrooms, where the door can be closed, and the curtain be drawn, through the social interaction in every section around gardens and kitchens to the more complex and challenging offers and spaces for activity, sports, and teaching.

That gives opportunities for the best setup for interaction between patients, relatives and employees through as meetings, physical activity or everyday practical activity.



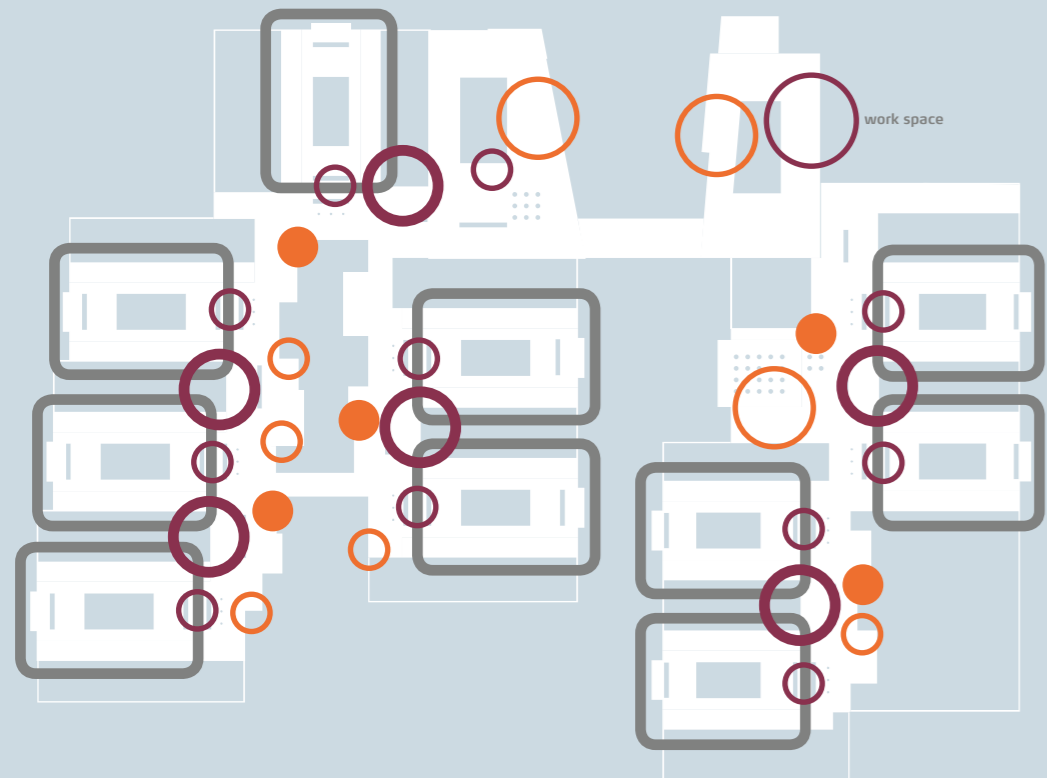
PIGEON ROOM / typical work and conference facilities in each ward



*"The design is based on shared human values - it just needs to be scaled according to the situation and process for each individual
Suddenly, the thought of a new healing architecture became simple"*

Christian Kadsson
Partner of Karlsson architects

TRANSPARENCY



- common treatment area
- shared management
- patient section

TRANSPARENCY

Transparency supports the relation between patients and staff and gives a better understanding of what is going on...

This creates security for both patients and staff and gives each patient easy access to typical activity facilities.

If possible, we have made glass walls between common space, living area, meeting rooms and workspace, often supplemented by light curtains which gives opportunities to change the transparency and character of the room.

This underlines the notion of proximity and allows easy access to staff, but also supports the strategy of dynamic security.





above : late afternoon - common areas / transparency and light as wayfinding

top right : glasswall / foils

bottom right : ward workspace / patient area



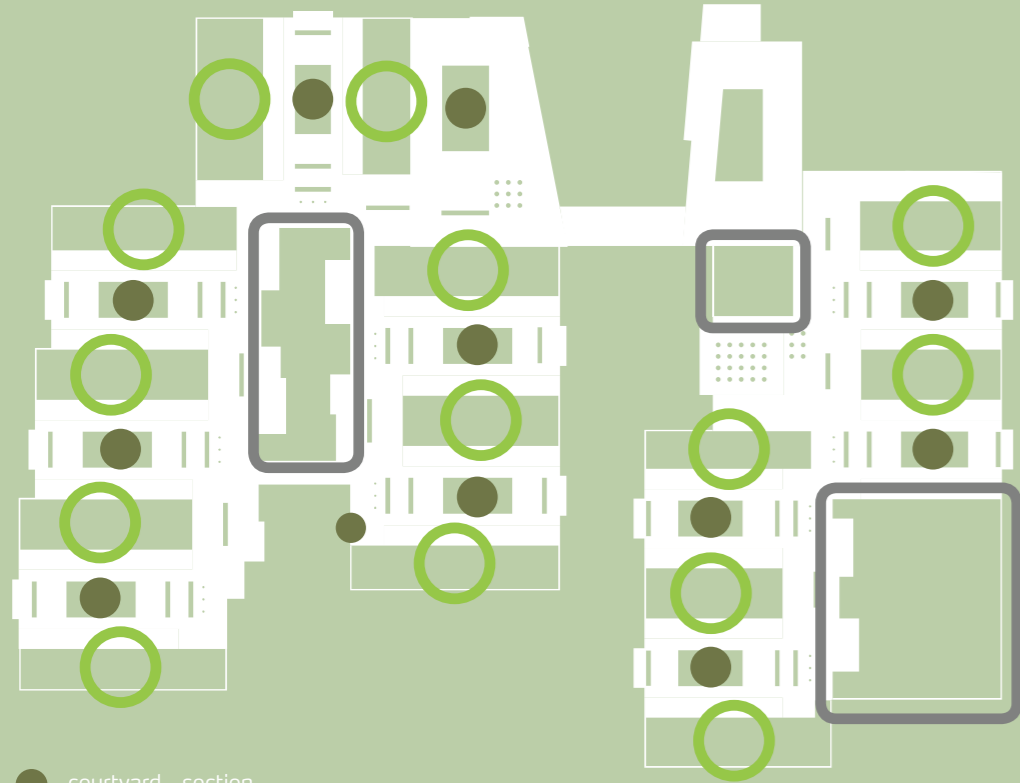
above : common areas / shared conferencerooms

right, right : ward workspace / meetingroom



General and forensics wards and gardens / public path and park areas

INDOOR & OUTDOOR



- courtyard - section
- quiet garden
- activity garden

INDOOR & OUTDOOR

Inside, the building is organized and designed in an informal and open way, around eventful unity of spaces and inner courtyard gardens.

More than 50 courtyards and gardens in different size, design and use, gives a variety of options for outdoor activities for both patients and staff.

The inner courtyards in each ward provides a safe and secure outdoor space and easy access for patients in relation with typical indoor activity areas - a living area with the sky as roof.

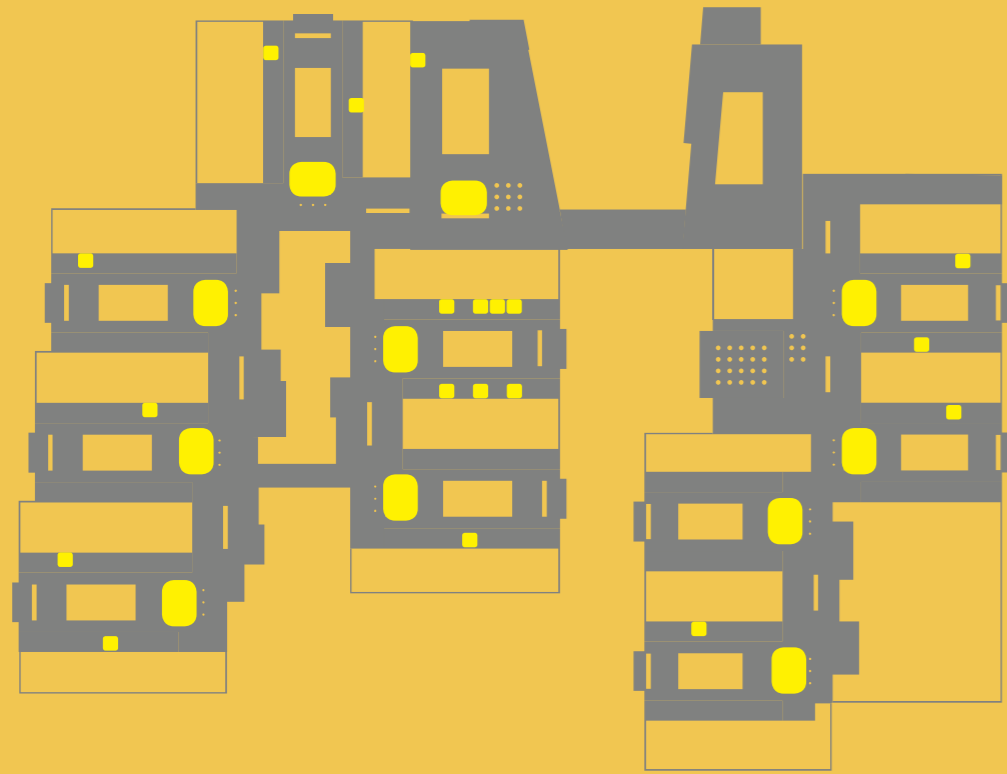
The large glassfacades and easy access to outdoor areas makes the daily rythm of light and weather a vital part of the daily stimuli and activity.





The project is complemented by a circadian rhythm lighting design, which is based on a dynamic LED technology, supporting the work with patients through both day and night.

ARTIFICIAL LIGHT



CIRCADIAN LED LIGHT

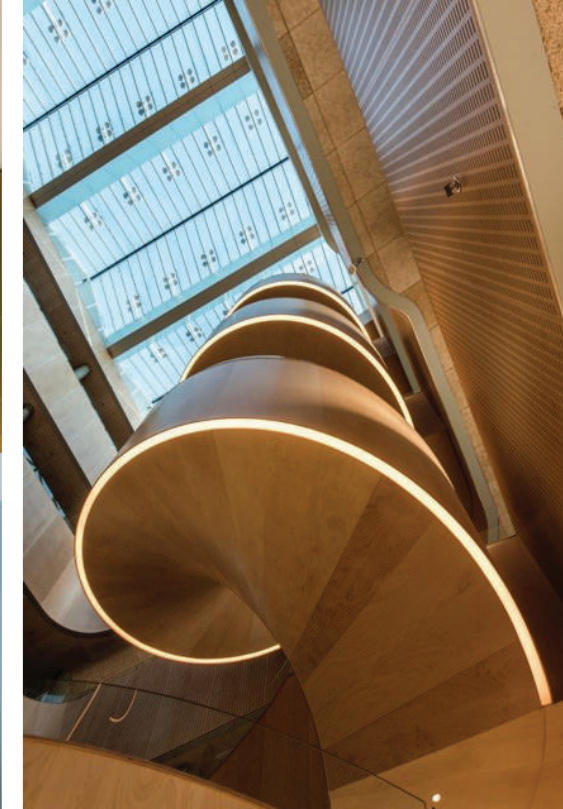
- staff area
- patient rooms

DAYLIGHT & ARTIFICIAL LIGHT

Both daylight and artificial light has been an essential part of the layout and design of the building.

The artificial light is based on the newest technology in LED as a circadian rhythm design to support the rhythm of day and night for both patients and staff.

The layout also supports the typical activities through the day and is used as an easy wayfinding through the evening and night.





Above : Common areas / late evening scenarium - the artificial light is changed in both brightness and colour (circadian rhythm design)

Right : Common areas by patientrooms / daylight - the artificial light is reflected on the warm colored surfaces on a gray day



Above : workspace ward / early evening - the artificial light is very dim when there is no activity in the ward

Right : sports hall / artificial light integrated in the skylight

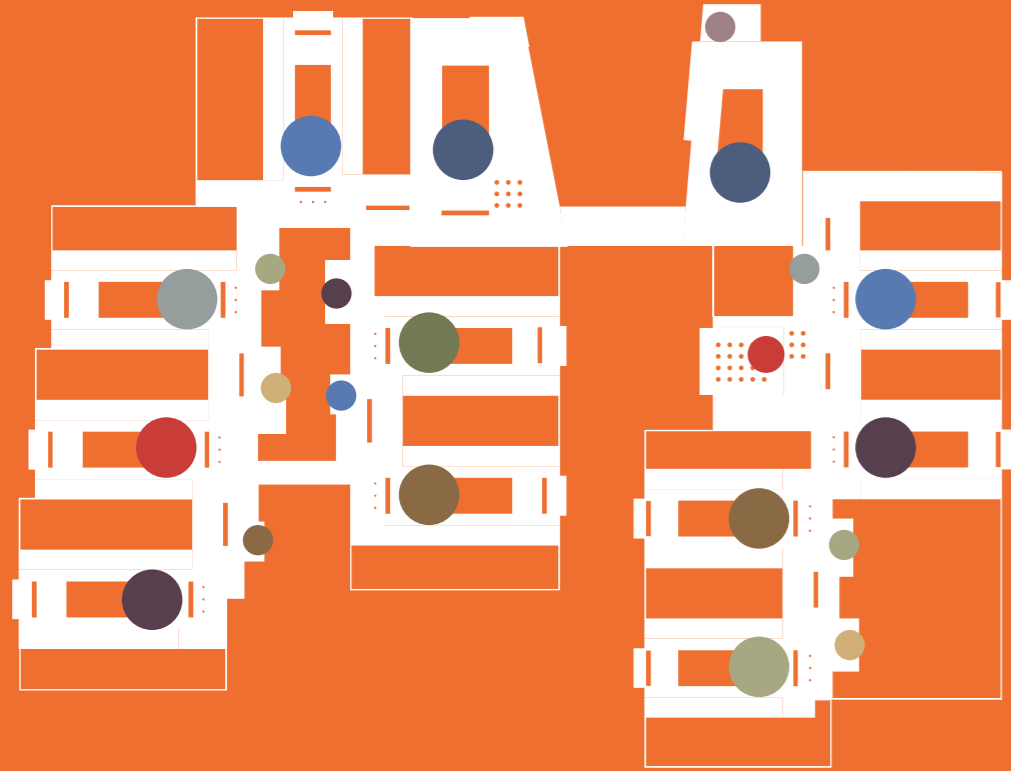
Right, right : buiding 3, atrium / artificial light is reflected on the warm colored surfaces on a gray day



Glass mosaics / glaswall divides common and staff facilities at the main entrance



ART / COLOURS



Every section in psychiatry and forensic has its own area color. The color intensifies the identification of a section and the wayfinding in the building.

ART / COLOURS

The colour scheme is developed in a close cooperation with the artist Malene Landgreen.

The colour project has been created from a series of special composed colour palettes and gradients, which is organized from an overall zoning, in colour, of the departments, sections, and floors.

The palettes combine the specific and recognizable harmonies of stronger colours and light neutral colours

The selections of colours are manifested in ten colour palettes, which gives identity to specific areas in the building.

Each of the ten area colours are associated with several colours intended to the walls, furniture, doors, and foils

– these palettes compliment the area colours.



Malene Landgreen





Above : Building 2 / common areas by reception area clinics

Right above : arts and common signage are integrated

Right below : Building 3 / common area by the atrium / clinic meeting rooms



Above : Common area by patient-rooms / colours and daylight defines each part of the building

Right : Coloured door and foil / shades of red

Right, right : Building 3 / the atrium is defined by individual colours on each floor, birch panels and the daylight





Early evening - common areas / training facilities and meeting rooms with curtains drawn

ART / POETRY

I LANDSKABET
 ER BYGNINGEN
 I BYGNINGEN ER BASSINET
 I BASSINET ER VANDET
 I VANDET ER BØLGERNE
 I BØLGERNE ER REFLEKSIONERNE
 I REFLEKSIONERNE ER
 LANDSKABET

"I landskabet er bygningen, i bygningen er bassinet, i bassinet er vandet, i vandet er bølgerne, i bølgerne er refleksionerne, i refleksionerne er landskabet."

Translation:

In the landscape is the building, in the building is the basin, in the basin is the water, in the water are the waves, in the waves are the reflections, in the reflections is the landscape."

ART / POETRY

In collaboration with Ursula Andkjær Olsen, there has been developed complete decoration of the building based on the primary ideas of transparency and proximity.

Lyrics and graphics are based on relation and function in each specific area, as both necessary restriction of insight but also encouraging introductions to people and facilities.

The texts - more than 200 - are developed in a dynamic collaboration between artist, employees and patient groups.



Ursula Andkjær Olsen





*Sometimes lyrics can be more precise than diagnoses and explanations...
Ursula Andkjær Olsen is maybe the strongest danish poet in Denmark at the moment and I am delighted that she accepted to be a part of the team - the result is simply outstanding !*

Christian Karlsson
Partner of Karlsson Architects

SAMTALE 12
8.32 | 8.14AM

SAMTALE 13
8.32 | 8.14AM

D
E
N

W
A
G
M
O
D
E
R



Above : forencis / closed foils separates common areas and training kitchen

Right above : acces to shared auditorium – indblik / udsyn (danish)

Right below : Building 3 / glasswall and open foils



Above : common areas / glasswalls and open foils creates vision and activity

Right : acces to ward workspace / colours, foils, lyrics and signage creates a easy to use wayfinding

Right, right : acces to large training facilities / closed foils creates both attention and privacy

